



Our *passion* is enclosures.

Sophisticated Enclosure Solutions

How we change the World of Industrial Enclosures



高要求的机箱构思

我们改造工业机箱世界



ROLEC. A family business with tradition

ROLEC - an independent, family owned company of the second generation, takes it's responsibilities seriously, caring for it's customers, staff and their families, as well as its region. Motivated by their passion for enclosures, Friedhelm Rose and his son Matthias, founded ROLEC 20 years ago. "New tracks in enclosure technology" was the motto of the new enterprise.

In contrast to the consumer industry, the production industry plans on a long-term basis. This thinking is reflected by the aluKOM enclosures, developed by Friedhelm Rose 40 years ago. These are still being sold and used worldwide.

The "Passion for enclosures", is still prevalent within the second generation of directors and in the entire ROLEC team. ROLEC corporate culture, places people and customers' requirements at the centre of all decisions.

This is the most significant factor of the ROLEC success, resulting in enclosures that continue to set new standards in technology and design. Therefore, increasing the value to the customer. This brochure illustrates all important ROLEC innovations, reflecting 20 years of development in the enclosure industry.



罗镭格 (译文). 具有悠久传统的家族式企业

作为一个独立自主，第二代接上了班的家族式企业我们非常注重我们对客户，公司员工，我们的家庭和当地社会的责任。20年前，现代机箱工业创始人的弗雷德亨姆。罗泽与儿子马蒂亚斯创办了罗镭格 (译文) 公司。当时他对机箱的激情成为了开发机箱工作的最大动力，“开辟机箱技术新道路“成为了新成立的公司的座右铭。

工业客户与消费品业用户不同之处在于前者想的和做的都是从长远方面去考虑。其中一个很好的例子就是F。罗泽在近40年前发明的到今天为止世界各地都还在使用的铸铝机箱 (aluKOM)。

对“机箱的激情“至今还体现在第二代接班人和全体公司员工身上。这个激情及把人和客户的需求放在第一位的企业文化是我们罗镭格成功的因素。

由此得出的结果是一如既往地在行业里树立技术和设计的新标准，为客户创造出更多价值。这本小册子显示了罗镭格所有重要的开发的产品。同时它也是机箱业过去20年发展的缩影。

ROLEC. Our business principle

We love enclosures. Dedicated teams of specialists are motivated by a desire for creativity, innovation and technological leadership. We think and act strategically, with passion and environmental consciousness. Our products set new standards and convince people - worldwide.

40 years of enclosure experience and 20 years of ROLEC's success, combined with enterprising courage have lead to the wide acceptance of our ideas that resulted in successful products. Ideas are transformed into new production tools. All enclosures, produced with these tools are in stock.

Our customers' requirements are extremely important to us, no matter how large the quantities are. Therefore, we closely work together with the development departments of our partners, to create an optimal result by modifying ROLEC enclosures from stock.

Our service is clearly defined: deliver "ready to install" and "just in time". The large state-of-the-art CNC machine park, enables us to customize all enclosures quickly and accurately, at a reasonable cost. All standard colours, as well as specific customer requirements, can be carried out in our modern powder-coating line.



罗镭恪. 我们经营的原则

我们热爱机箱。在创造创新和技术领先的愿望的驱使下我们组织各个领域经验丰富的专家一起组成团队。我们的思想和行动都是由长远战略指导，充满激情和环保意识。在这种精神指导下研制出来的产品不但受到世界各地客户信服欢迎而且还设立了新标准。

40年的机箱制造经验以及20年的罗镭恪的成功历史是巨大的资本。它与企业家敢说敢干的精神相结合使到我们的想法受到客户的广泛认可。这些想法被落实变为成功的新型产品放置仓库以便随时满足客户需要。

如何能满足我们的客户的需求是衡量我们工作的标准。与我们合作伙伴的研发部门一起我们把罗镭恪(译文)仓库里的机箱按客户要求改成客户所需的最佳产品。无论是小量还是大批量一视同仁。

我们据有明确的服务准则。我们供的货“既马上可安装又准时”。为此我们做好了充分准备。一个大型现代化的数控机床快速、准确和具有成本效益地加工所有的机箱。在我们的现代喷漆车间里，我们不仅使用标准的颜色，而且可根据客户的愿望提供所有颜色。

aluDISC

- Integrated recesses for membrane keypads
- Enclosure attachment with closed lids
- Design covers for the perfect look
- Economical lid support
- Attachment domes in the enclosures and lids for components
- Available in 4 sizes from 110 x 97 x 55 mm to 190 x 179 x 90 mm

Design: 2011 ROLEC



IP66/67
IP69K

铝合金圆机箱

- 膜键盘用凹形盖面
- 可机箱封闭后再固定
- 外观完美的档盖
- 固定盖子连接件
- 机箱机盖里具备安装部件用固定点
- 可提供4种规格，110 x 97 x 55 mm 至190 x 179 x 90 mm

- Integrated recesses for membrane keypads
- Enclosure attachment with closed lids
- Design covers for the perfect look
- Economical lid supports
- Attachment domes in the enclosures and lids for components
- Available in 8 sizes from 125 x 84 x 59 mm to 260 x 160 x 90 mm



IP66
IP67



Design: 2010 ROLEC

铝合金多功能机箱

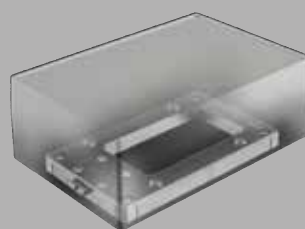
- 膜键盘用凹形盖面
- 可机箱封闭后再固定
- 外观完美的档盖
- 固定盖子连接件
- 机箱机盖里具备安装部件用固定点
- 可提供8种规格，125 x 84 x 59 mm 至260 x 160 x 90 mm

aluCLIC

Aluminium enclosures with snap-on device

- Click together instead of screwing
- Replacement within seconds
- More space for the electronics
- The entire front of the enclosure can be used
- The lid is screwed from the back
- Available in 3 sizes from 90 x 130 x 70 mm to 130 x 200 x 70 mm

Design: 2008 ROLEC



**IP67
IP69K**

铝合金夹卡式机箱

用在快速换箱架的铝合金机箱

- 卡式代替拧螺丝
- 煞那间换好机箱
- 箱内面积大
- 机箱盖面可全利用
- 盖子反面上螺丝
- 可提供三种规格，90 x 130 x 70 mm 至130 x 200 x 70 mm

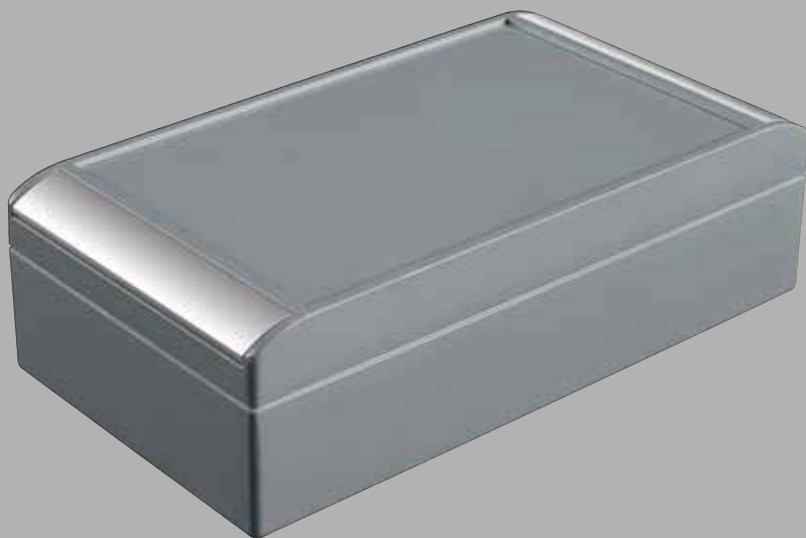
aluCASE

Premium aluminium enclosure

- Unrivalled design
- Integrated recesses for membrane keypads
- Design covers for perfect appearance
- Integrated lid supports
- Mounts fastening for closed enclosures
- Available in 22 sizes from 50 x 75 x 33 mm to 200 x 330 x 120 mm



IP67
IP69K



Design: 2002 ROLEC

铝合金机箱

高级铝合金机箱

- 无与伦比的设计
- 膜键盘用凹形盖面
- 外观完美的档盖
- 固定盖子连接件
- 机箱封闭后固定
- 可提供22种规格，50 x 75 x 33 mm 至200 x 330 x 120 mm

conFORM

Die-cast aluminium enclosure

- Separate sealing and contact surfaces providing excellent shielding from interference
- Contact via bright metal toothing surface makes coated, conducting seals un-necessary
- Tested and certified by the Technical University of Hanover
- Sizes as for standard enclosures
- Available in 14 sizes from 79 x 84 x 44 mm to 268 x 168 x 100 mm

Design: 1995 ROLEC



IP66/67

高抗射机箱

铸铝机箱

- 单独的密封和接触层保证高度抗射线干扰
- 金属齿形触面使到密封圈多余
- 由汉诺威大学检验和发放证书
- 规格可与标准机箱通用
- 可提供14种规格，79 x 84 x 44 mm 至268 x 168 x 100 mm

aluNORM

Die-cast aluminium enclosure

- Multivariable aluminium enclosure system with unique single-channel fastening system
- Four variations:
flat lids and high base sections - high lids and flat base sections
flat design - high design
- Matching polyester enclosures available for many sizes
- Available in 86 variations from 50 x 65 x 40 mm to 640 x 320 x 120 mm



IP66/67



Design: 1987 ROLEC

铝合金标准机箱

铸铝机箱

- 万能铝机箱系统，独特的单渠道固定
- 4种规格
扁盖 + 高机箱 - 高盖 + 扁机箱
扁规格 - 高规格
- 也可提供许多同样规格的聚酯机箱
- 可提供86种规格，55 x 65 x 40 mm 至640 x 320 x 120 mm

aluKOM

Standard enclosure

- Compatible with conventional enclosures
- Particularly suitable as terminal and distributor enclosures
- Also available in Ex specification (for areas subject to explosion hazards)
- Available in 24 sizes from 50 x 45 x 30 mm to 600 x 310 x 110 mm

Design: 1970 F. ROSE



IP66/67

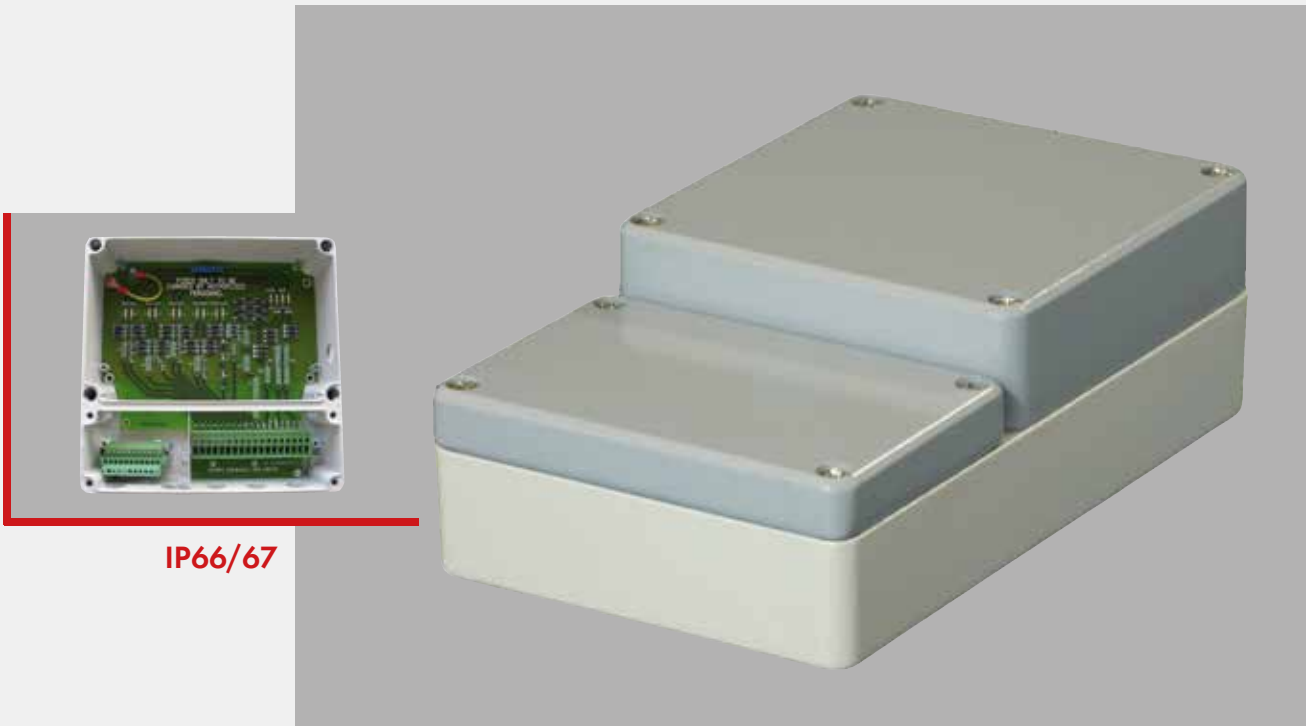
铸铝标准机箱

标准机箱

- 可与其他机箱通用
- 特别适用做端子箱和配电箱
- 可供应特殊型号（防爆范围）
- 可提供24种规格，50 x 45 x 30 mm 至600 x 310 x 110 mm

Aluminium enclosures - Two chamber systems

- Secure connection technology with print or terminal blocks, which can be opened independently
- Both chambers can be separated through an enclosed wall
- Different lid variations
- Ingress protection IP 66-67
- Available in 4 sizes from 166 x 100 x 55 mm to 240 x 240 x 103 mm



双间铝机箱

铝机箱 - 双间系统

- 可单独打开的双仓接线箱，印刷配电板和接线端子接线安全技术
- 两个部分可用随箱供应的隔离片分开
- 多种盖子规格
- 保护等级 IP 66 - 67
- 可提供4种规格，166 x 100 x 55 mm 至240 x 240 x 103 mm

handCASE

Die-cast aluminium enclosure

- Unique hand enclosure system made of die-cast aluminium
- For industrial applications requiring strength and sealing qualities
- Protective recess for membrane keypads
- Integrated battery power supply for wireless applications
- Available in 4 different variations from 180 x 80 x 42 mm to 220 x 100 x 62 mm

Design: 2006 ROLEC



IP66/67

手提盒 铸铝机箱

- 独特的手提式铸铝机箱系统
- 适合工业范围对稳定性和密封性要求高的用途
- 按键膜保护边
- 独立的电源，电池供电，无需电线
- 可提供4种规格，180 x 80 x 42 mm 至220 x 100 x 62 mm

handCASE *R

Die-cast aluminium enclosure - *Variant design R

- Unique hand enclosure system made of die-cast aluminium
- For industrial applications requiring strength and sealing qualities
- Protective recess for membrane keypads
- Integrated battery power supply for wireless applications
- Available in 4 different variations from 180 x 80 x 42 mm to 220 x 100 x 62 mm



IP66/67

Design: 2008 ROLEC

手提盒

铸铝机箱 - 设计型R

- 独特的手提式铸铝机箱系统
- 适合工业范围对稳定性和密封性要求高的用途
- 按键膜保护边
- 独立的电源，电池供电，无需电线
- 可提供4种规格，180 x 80 x 42 mm 至220 x 100 x 62 mm

polyTOP

Glass-fibre reinforced polyester enclosure

- Single-channel fastening system - sizes as per aluNORM enclosures
- All metal parts made of rust-proof stainless steel
- Particularly suitable for outdoor use and in the chemical industry
- Also available in Ex specification (for areas subject to explosion hazards)
- Available in 13 sizes from 82 x 82 x 60 mm to 404 x 404 x 160 mm

Design: 1987 ROLEC



IP66/67

聚酯机箱

由玻璃纤维聚酯树脂做成

- 独特的单渠道固定机箱 - 尺寸与铝合金标准机箱同样
- 金属部份都是由不锈钢做成
- 特别适用于室外 - 化学工业
- 可供应特殊型号（防爆范围）
- 可提供13种规格，82 x 82 x 60 mm 至404 x 404 x 162 mm

polyDOOR

Glass-fibre reinforced polyester enclosure

- Enclosure with integrated lid hinges
- Single-channel fastening system
- All metal parts made of rust-proof stainless steel
- Also available with a sight window in the lid on request
- Available in 8 sizes from 140 x 120 x 100 mm to 320 x 200 x 120 mm



IP66



Design: 1987 ROLEC

聚酯开门机箱

由玻璃纤维聚酯树脂做成

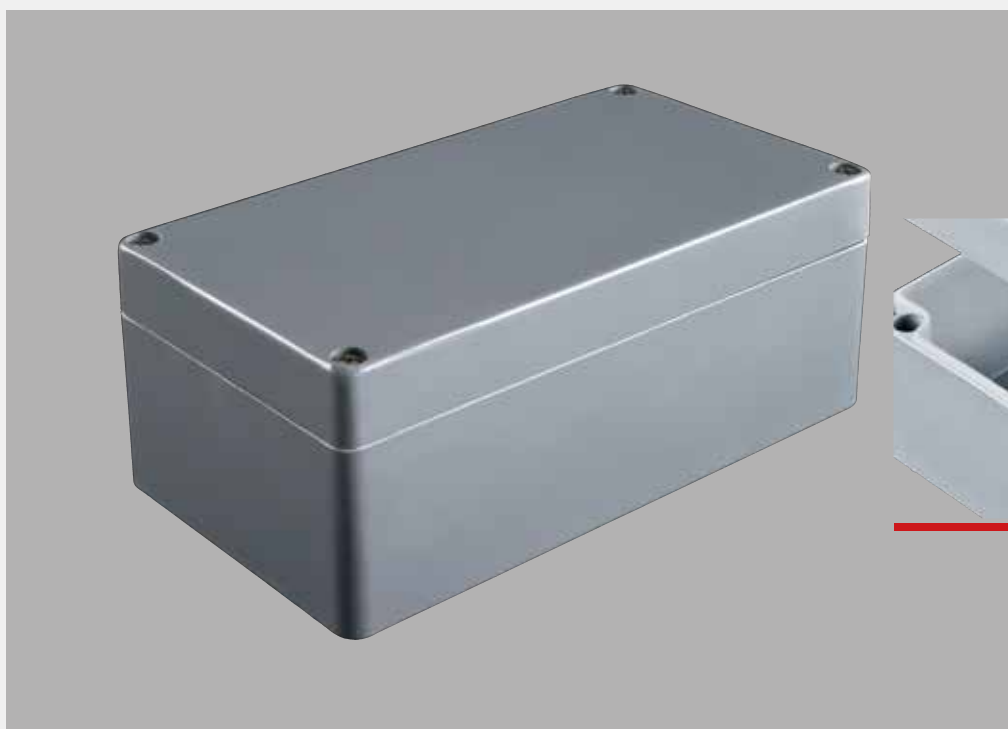
- 集成铰链盖
- 独特的单渠道固定系统
- 金属部份都是用不锈钢做成
- 也可提供盖面加窗户的规格
- 可提供8种规格，140 x 120 x 100 mm 至320 x 200 x 120 mm

polyKOM

Glass-fibre reinforced polyester enclosure

- Compatible with conventional polyester enclosures
- Particularly suitable as terminal and distributor enclosures for the chemical industry
- Also available in Ex specification (for areas subject to explosion hazards)
- Available in 15 sizes from 80 x 75 x 55 mm to 400 x 405 x 120 mm

Design: 1970 F. ROSE



IP65

聚酯标准机箱

由玻璃纤维聚酯树脂做成

- 可与其他塑料机箱同用
- 特别适用作为化学工业的端子箱和配电箱
- 可供应特殊型号（防爆范围）
- 可提供15种规格，80 x 75 x 55 mm 至400 x 405 x 120 mm

Gehäuse aus thermoplastischem ABS V-0

- Premium ABS V-0 industrial enclosure of sophisticated design
- No need to open the enclosure for mounting
- Captive design covers are hiding lid and enclosure fixation screws
- Screw mounts in the enclosures and lids for contents
- Recesses in the lids for membrane keypads - Integrated lid supports
- Available in 5 sizes from 120 x 90 x 50 mm to 280 x 170 x 60 mm



IP65/66

Design: 2004 ROLEC

热塑美型机箱

热塑机箱ABS V-0

- 优质工业用ABS V-0机箱，高要求的设计
- 可在机箱盖子关闭的情况下安装
- 丢不掉的特设盖板隐遮盖子和机箱固定螺丝
- 机箱内和盖子上都有固定凸点
- 盖子表面凹形可装薄膜按键盘 - 盖子有固定装置
- 可提供5种规格，120 x 90 x 50 mm 至280 x 170 x 60 mm

technoCASE

Gehäuse aus thermoplastischem ABS

- Multivariable ABS enclosure system
- Mounting surface concealed by design covers
- Double functionality options for all enclosures:
Flat lid plus high base sections or lid as the base section plus high top section
- Recesses in the lids for membrane keypads - Integrated lid supports
- Available in 25 sizes from 80 x 80 x 80 mm to 360 x 240 x 160 mm

Design: 1992 ROLEC



IP66/67

技术型热塑机箱

ABS热塑机箱

- 多种多样的ABS 机箱系统
- 独特设计的遮板盖住了安装面
- 浅盖子 + 高机箱 或盖子作为下部 + 高上部
- 盖子表面凹形可装薄膜按键盘 - 盖子有固定装置
- 可提供25种规格，80 x 80 x 80 mm 至360 x 240 x 160 mm

technoBOX

Thermoplastic ABS enclosure

- Budget ABS enclosure in standard dimensions
- Attractive design
- Recesses in the lids for membrane keypads
- Screw mounts in the enclosures and lids for contents
- Available in 10 sizes from 66 x 51 x 35 mm to 241 x 161 x 80 mm



IP66/67



Design: 1992 ROIEC

技术箱

塑料机箱

- 经济标准型ABS机箱
- 外观完美
- 膜键盘用凹形盖面
- 机箱机盖里具备安装设备用的固定点
- 可提供10种规格，66 x 51 x 35 mm 至241 x 161 x 80 mm

mobilCASE

Formed Aluminium enclosure

- Mobile control enclosures made of formed aluminium in modern design
- Multivariable due to 3 profile sizes in open and compact design
- Integrated battery power supply within the handle
- Versatile accessories such as wall bracket, table stand, carrying straps with protective caps, etc.
- Available in 6 profile versions with 80, 100 or 130 mm width; lengths as required

Design: 2005 ROLEC



IP54/65

移动式机箱

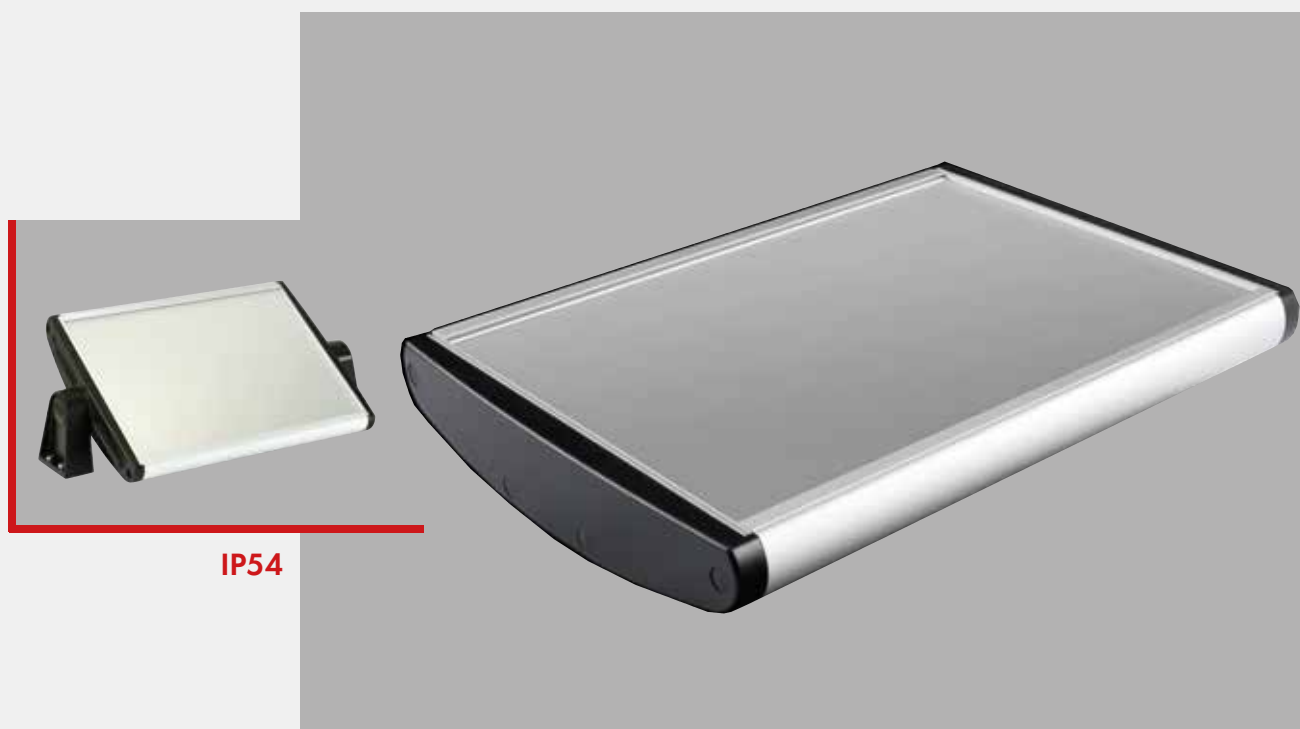
铝合金型材机箱

- 先进外观设计的铝合金型材移动控制箱
- 3个不同尺寸的型材可大可小，可敞开式或封闭式
- 电流供应通过手柄里装的电池
- 多种多样的附件，如墙座，桌子架，带保护盖的背带等
- 可提供6种规格，80、100或130mm宽；长度任选

aluDISPLAY

Formed Aluminium enclosure

- Flat display and/or operating enclosure of sophisticated design
- Quick & easy installation of assemblies
- Front panels fastening screws concealed by design strips
- Universal wall bracket - available as a console holder or suspension-system
- Available in 3 profile sizes with 180, 240 or 300 mm width; lengths as required



Design: 2007 ROIEC

铝合金显示操作箱

铝合金型材机箱

- 外形美观的型材扁式显示和操作箱
- 安装简单快速
- 形美的板条挡住面板上的固定螺丝
- 万能墙架，可供应台架式或悬挂式系统
- 可提供3种规格，180、240或300mm宽；长度任选

aluFACE

Aluminium enclosures with front plates

- Stable cast aluminium enclosure with front plates or membrane keypads
- One or two-chamber enclosure with separate connection space
- Various lid options
- Ingress protection IP 65-66
- Available in 6 variants and many sizes from 120 x 120 x 80 mm to 640 x 320 x 153 mm

Design: 1990 ROLEC



IP65/66

铸铝仪表机箱

带面板的铝机箱

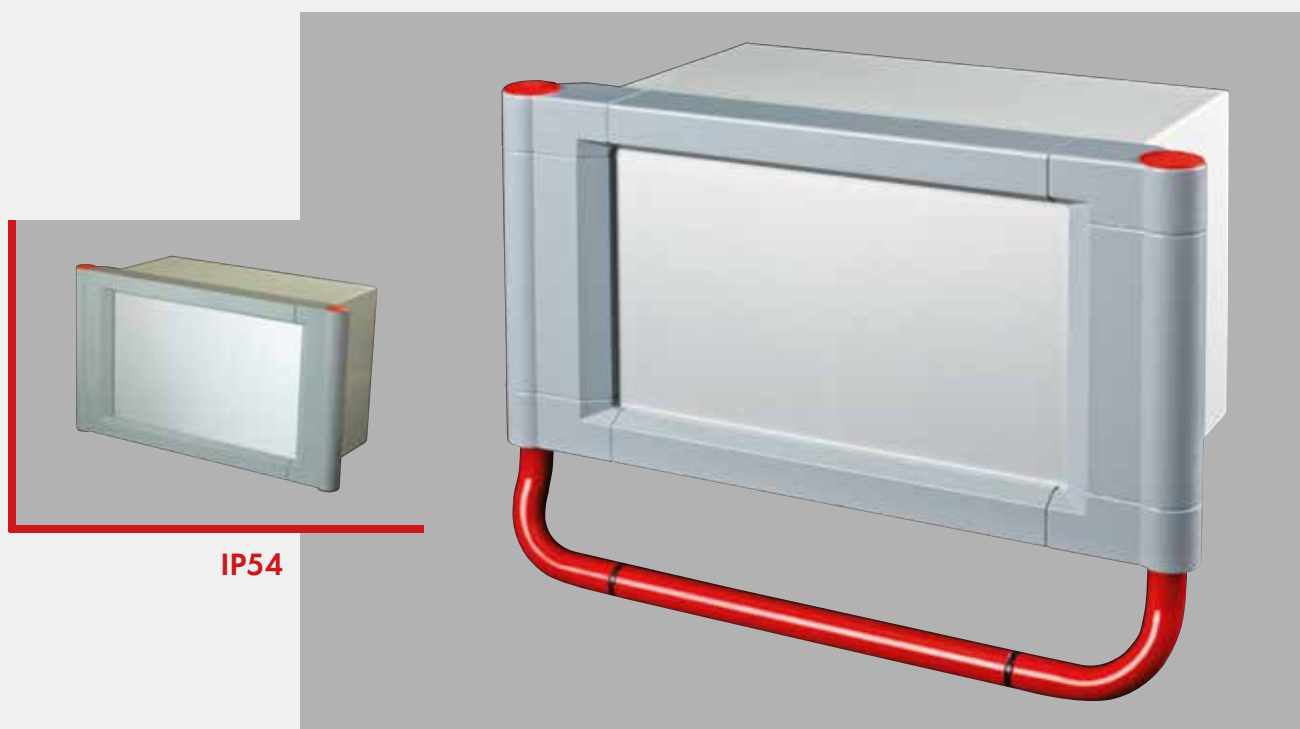
- 结实的铸铝机箱，带面板或膜键盘
- 可提供单仓或双仓加单独的接线仓
- 多种规格的盖子
- 保护等级 IP 65 - 66
- 可提供6种规格，120 x 120 x 80 mm 至640 x 320 x 153 mm

topVISION

topVISION series with sheet metal bodies and aluminium front frames

ROLEC®

- Hinged front frame door
- Mounting of front plates without visible screws
- Easy mounting of ROLEC suspension systems
- Available in 10 different sizes
- Available in any desired size from a quantity of 20 units



Design: 1992 ROLEC

超级型机箱

超级型机箱系列配有钢材箱体，铝制面框

- 可移动的框面门
- 看不到前板的安装螺丝
- 简单的悬挂系统安装方法
- 可提供10种不同规格
- 订货量超过20台的可订所有的规格

topVISION

multiVISION Kommando

multiVISION series made of extrusion-pressed aluminium profiles

- Variable display and command enclosures
- Two series: "Display" and "Command"
- "Display" provides 9 combinations of profiles for the variable depth of the enclosure
- "Command" provides 4 profile combinations
- The profiles have free selectable lengths from 200 to 800 mm

Design: 2003 ROLEC



IP65

万能型控制机箱

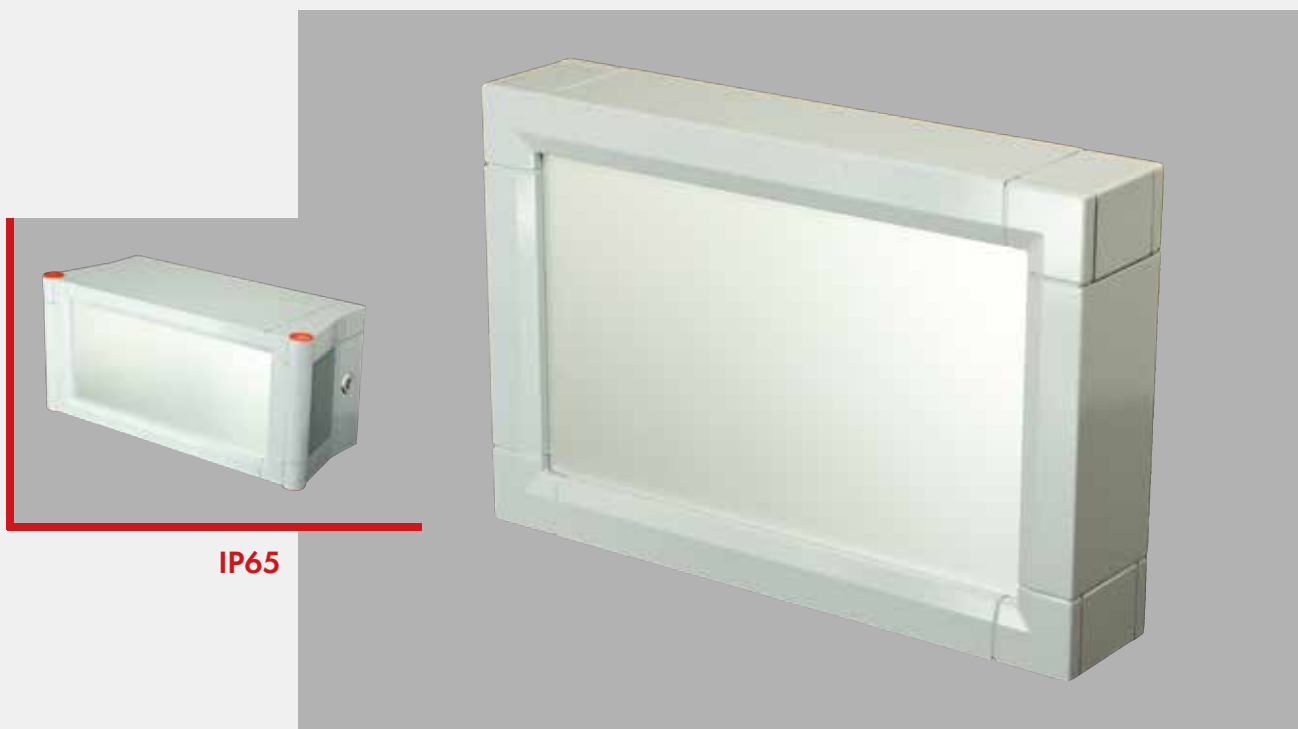
挤压铝型材系列

- 各种各样的显示和指令机箱
- 两个系列：„显示型“ 和 „控制型“
- „控制型“有4个组合可能性
- 长度可在200 至800 mm间选择

multiVISION Display

Budget arm support system for enclosures and devices

- Ingeniously simple adjustment by means of a set screw
- Clean design due to "In-pipe-assembly" of the carrying elements
- Greater internal space for connectors etc. due to the use of square tubes



Design: 2008 ROLEC

万能型显示机箱

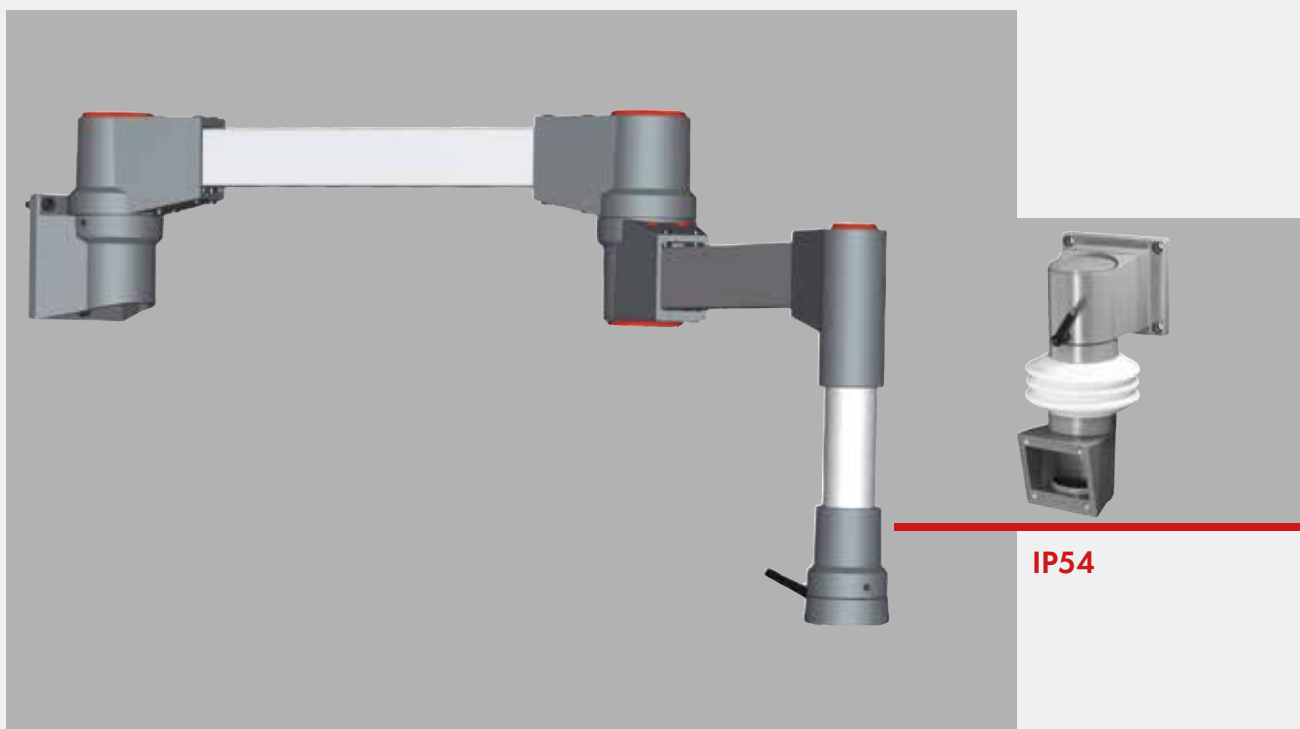
机箱和设备的经济型悬挂系统

- 天才般的简易调整方法
- 优秀的“支撑部件管内装”的设计
- 通过方管增大插头等用的地方

taraPLUS

Variable suspension-system for enclosures and devices

- Contemporary design
- Good load capacity due to the combination of square support tubing and round vertical tubes
- Unrivalled variation options due to 26 different components



Design: 2002 ROLEC

IP54

悬挂系统

多种多样的机箱和设备悬挂系统

- 现代化的设计
- 方管和园管的综合使用保证了良好的负载能力
- 由26个不同的部件组成无比的变化

QUADRO

Solid suspension-system for enclosures and devices

- Individual suspension-systems for medium and heavy load capacity
- 3 tube sizes on request: 50 mm, 60 mm and 80 mm
- High load capacity as system parts 50 - 60 - 80 are made of spheroidal
- Problem-free adjustment of the systems
- Up to 13 different components in 3 versions



IP54



Design: 1992 ROLEC

方形机箱

牢固的接线和设备悬挂系统

- 不同的中负荷和重负荷的悬挂系统
- 可提供3种方管厚度选择：50 mm, 60 mm und 80 mm
- 可提供3种规格球墨铸铁高负荷系统，50 - 60 - 80
- 简单的系统调整
- 3种不同规格，13个部件



Our *passion* is enclosures.

Competent support through our organisation

Approximately 45 % of our production is taken by the German market; the remaining 55 % of our enclosures is at home all over the world.

Individual customer support in Germany is provided by ORCA, the joint sales organization of ROLEC and OKW. Delivery and order handling, is directly from the manufacturer avoiding third party involvement.

On an international level, we cooperate with experienced sales partners in the respective countries.

ROLEC has sales companies in the Netherlands, Italy and India.

Wherever superior enclosures are in demand – ROLEC as your dependable partner, always provides quick and reliable solutions, for the most varied requirements.

强大的销售队伍提供现场咨询服务

45%的我们的产品是提供德国市场使用，余下的55%是销售到世界各地。

负责德国客户的工作是由ROLEC 和 OKW公司的共同的销售公司 ORCA公司进行。供货和订单处理不用走弯路，直接由ROLEC公司处理

国际上我们和各国的专业销售伙伴合作。在荷兰、意大利和印度有我们自己的销售公司。

不管哪里需要优质机箱，ROLEC是您的可靠合作伙伴，根据您的不同需要为您提供快速可靠地解决方案。



ROLEC Gehäuse-Systeme GmbH
Kreuzbreite 2
31737 Rinteln/Germany

Fon/电话 +49 (0) 57 51 - 4003 - 0
Fax/传真 +49 (0) 57 51 - 4003 - 50
info@rolec.de
www.rolec.de